



HDC
HYUNDAI CUBICLE





Table of Contents

Hyundai cubicle philosophy	2
History	4
Main business	5
M-Board	10
1. Specification/ Process / Size/ Floor plan	
2. Product characteristics	
3. Color	
4. Example of construction	
- Residential	
(1) Kitchen	
(2) Art wall	
(3) UBR	
- Commercial	
(1) Elevator	
(2) Hallway	
(3) Partition	
(4) Whiteboard - White / Black	

Premium wall	2
Perforated panel	4
Metal ceiling	5

Philosophy

Creative directors who think of space

Hyundai cubicle strives to stay ahead of the growing public point of view by introducing a wide range of materials and designs with diverse themes in the space.

It specializes in building materials that discover users' hidden desires, provide optimal design, and provide creative sensitivity to space.

Service design for the public through experience and understanding

Creating designs on demand is the most basic service we can provide. Planning the most convenient space for users and creating a space that is efficient and faithful to the public role in their use. Identify the user's needs and say, 'Ah! The space I wanted was like this!' to impress them. That's the most important service that all the employees of Hyundai Cubicle are always thinking about, studying, and proposing.



With an architectural mind

As a space designer, Hyundai cubicle focuses on creating an optimal space based on diverse experiences and knowledge, and will continue to develop in a different way. Design your desire, that's the goal of the Hyundai cubicle.



History

- 2019**
 - Obtain Performance Certification
- 2018**
 - Ministry of National Defense's 'Selected Best New Technology Products Company'
 - M-Board launch
- 2016**
 - Patent registration "architectural waterproof panel"
 - Patent registration " Composite panels with improved water resistance when attaching screws "
 - Seoul City's Reputation on School Restroom Business, Dream of, and Future Planning
- 2015**
 - Patent registration "toilet information display device"
 - Quality certification of the Q mark of toilet cubicle
- 2014**
 - Toilet partition environment marker certification
 - Design registration "Locker for toilet doors"
 - Patent registration "Lower fixation system"
 - Patent registration "panel using magnesium board"

Company introduction

- 2013**
 - Certification of wall panel environment signs
- 2010**
 - Establishment of Corporate Research R&D
- 2009**
 - Public Procurement Service Nara Marketplace Comprehensive Shopping Mall Registry
 - Certification of venture companies
 - ISO9001 Certification of Quality Management System
- 2008**
 - Good-design Selection
 - AIDA (Australian World Design Award)
 - World's First Development of Design Cubicle
- 2006**
 - Establishment of Hyundai Cubicle



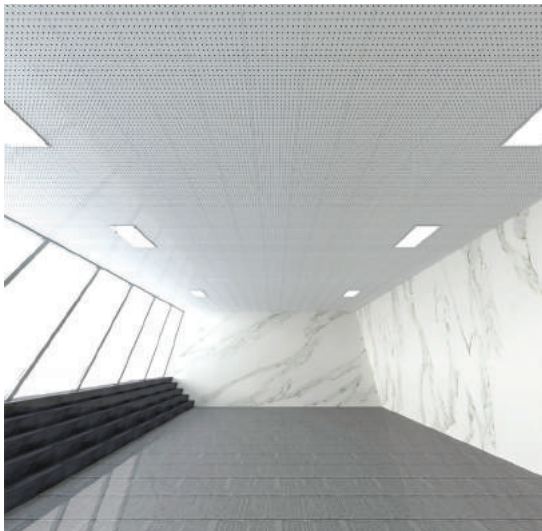
Main business



M-Board



Wall panel



Metal ceiling



Sound absorption panel

Company introduction



Toilet cubicle

Fitting room



M-Board

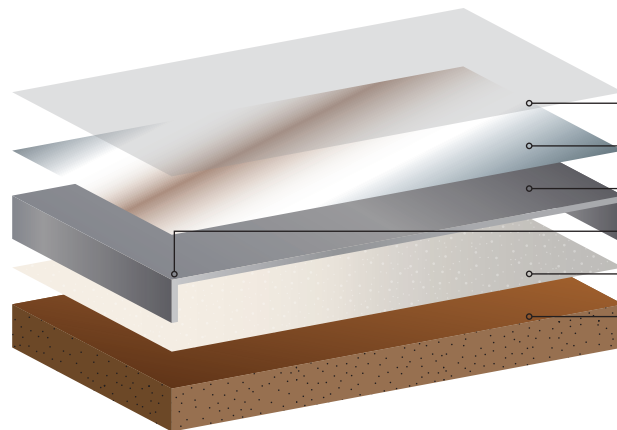
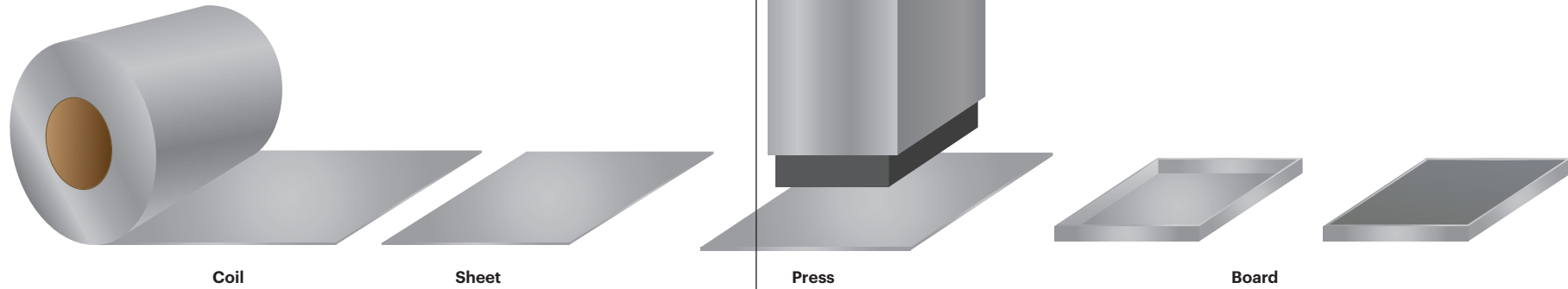
M-Board





Process

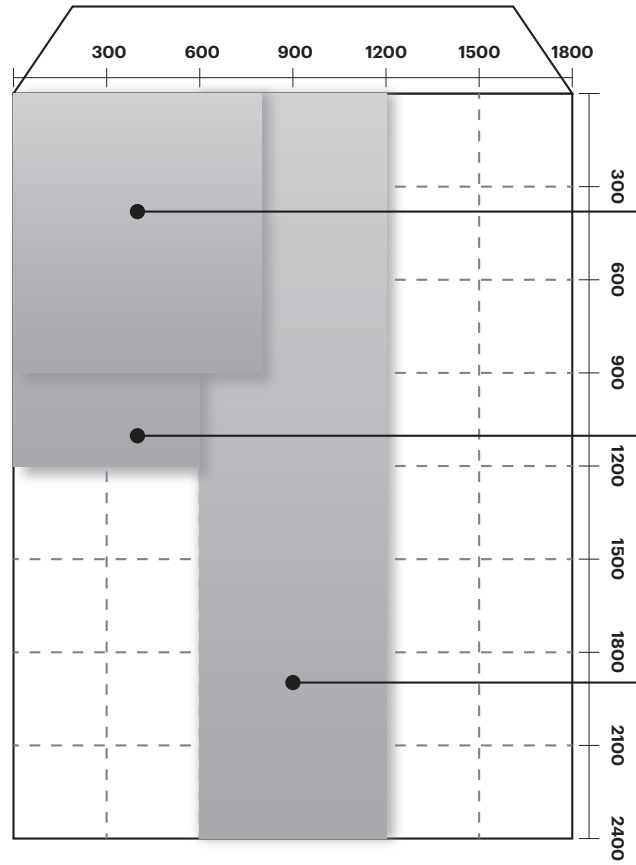
M-Board



Structure	Contents	Thickness
Protective film	Low-Density Polyethylene	50µm
Printing	Polyester/PVDF/Film Base	Below 1µm
Base Metal	Hot-dip Galvanized steel sheet Al SUS	0.4mm-1.2mm
Edge Area	2-4Radius	50µm
Adhesive	Eco-friendly Adhesive	50µm
Back Side Material (Filler)	Gypsum board MDF Honeycomb (Al, Paper)	9.5mm



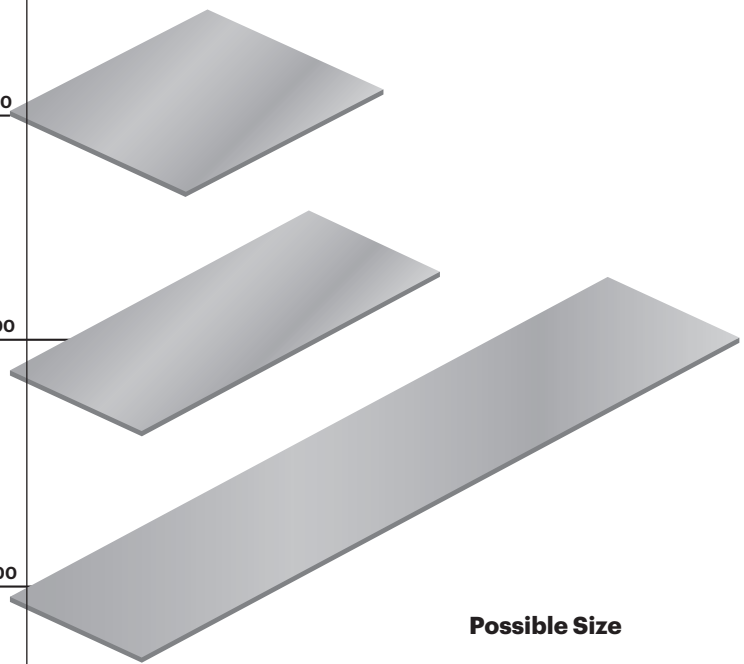
Specification



800 X 900

600 X 1200

600 X 2400



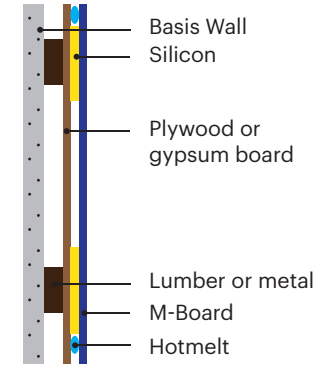
Possible Size

Dimension	Contents
Size	Length : 10-4000mm Width : 10-2400mm
Thickness	0.5-1.0mm

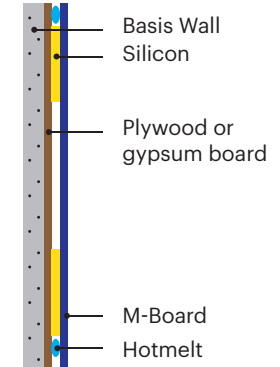
M-Board

HDC - 엠보드(M-board) - 스타드공법	HDC - 엠보드(M-board) - 하지직합공법	HDC - 엠보드(M-board) - 부탕작업 무공법	(주)현대라이플 신원로10길 1112 (동) 1112 41000 서울
1. HDC 엠보드 입면도			
2. HDC 엠보드 평면면도			
3. HDC 엠보드 끝내개 상세도			
4. HDC 엠보드 구조			M-board DETAIL

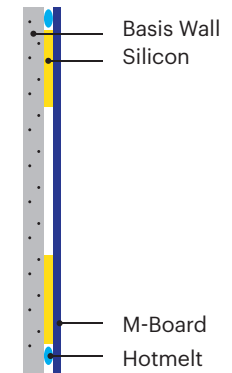
Stud construction



Direct installation on Plywood or gypsum board



Direct installation on the basis wall





Excellent design Convenient function

- ¹ No joint
- ² Excellent smoothing
- ³ Magnetic

Easy-to-maintain panel

- ¹ Easy cleaning with wipes and sponges
- ² No joints, no mold
- ³ Good hygiene and pollution-resistant



Fast and easy construction

- ¹ Quick to dry
- ² Reduced cost of rapid construction and installation compared to tiles (Construction time – 2 hours)

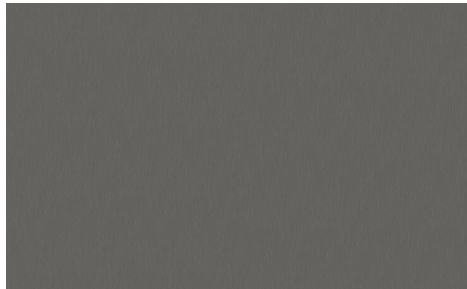
Whiteboard

- ¹ Apply design and functionality
- ² New concept Interior board
- ³ Color: Whiteboard
Blackboard

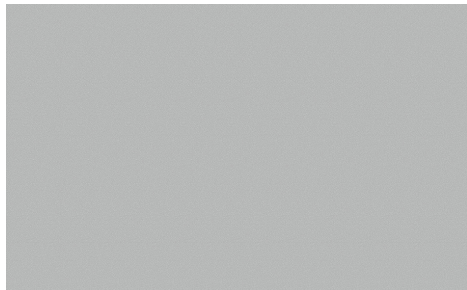




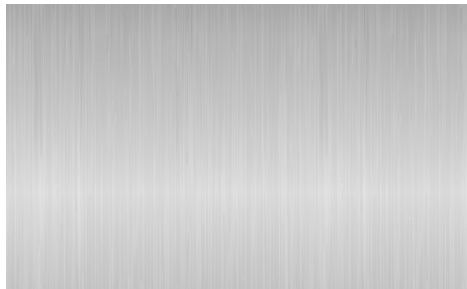
Colors



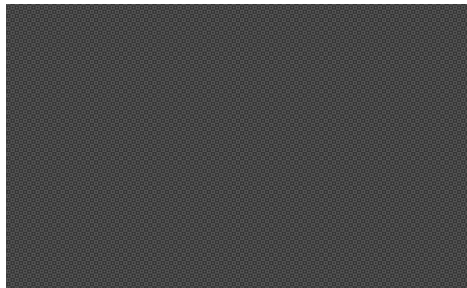
M-GH 10



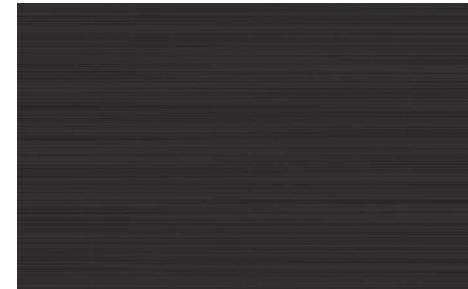
M-PG 10



M-SH 10



M-MF 20



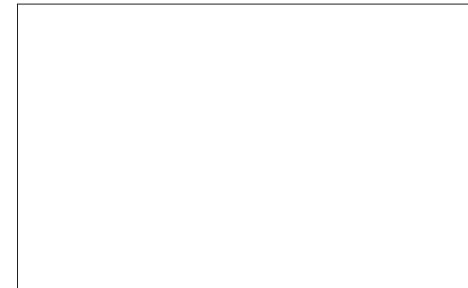
M-BH 20



M-WM 10



W-B 10



W-W 10

M-Board



Residential Kitchen



M-PG 10 [HG]

M - Board



M-GH 10 [HG]



M-PG 10 [HG]



Residential Art wall



M-MF 20 [MA]



M-WM 10 [HG]

M - Board



M-BH 20 [MA]



W-W 10 [HG]



W-W 10 [HG]



M-Board

M-BH 20 [MA]



Commercial Elevator

M-BH 20 [MA]

M - Board



W-GH 20 [MA]



M-SH 10 [HG]

29



Commercial Hallway



M-BH 20 [MA]

M-Board



M-BH 20 [MA]



Commercial Hallway



M-BH 20 [MA]

M-GH 20 [MA]



M-Board



M-GH 20 [MA]



Commercial Partition



M-BH 20 [MA]

M-Board

M-SH 10 [HG]



M-WM 20 [MA]



Commercial Partition



M-Board



M-MF 20 [MA]



M-GH 10 [HG]



M-MF 20 [MA]



Commercial Whiteboard - White



W-W 10 [HG]

-Board



W-W 10 [HG]



Commercial Whiteboard - White



W-W 10 [HG]



W-W 10 [HG]



W-W 10 [HG]

-Board



Commercial Whiteboard Black



W-B 10 [HG]



W-B 10 [HG]

-Board



W-B 10 [HG]



M-Board

Premium Wall

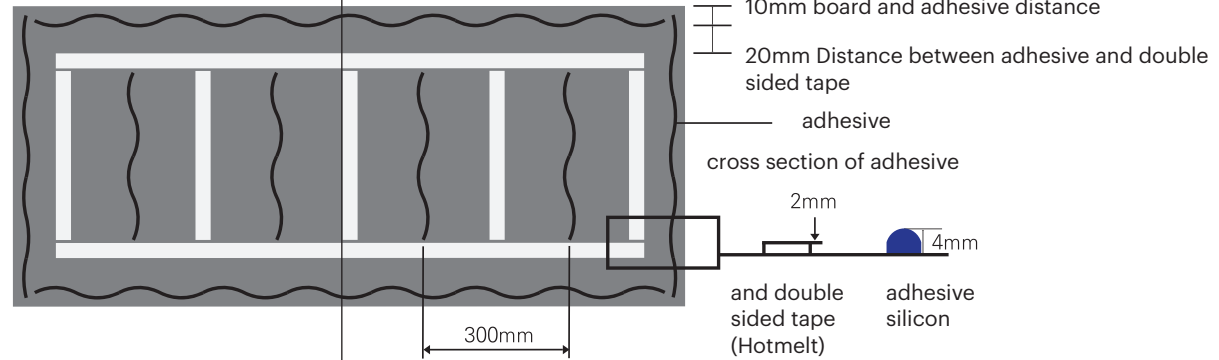




How to apply adhesive and attach double-sided tape

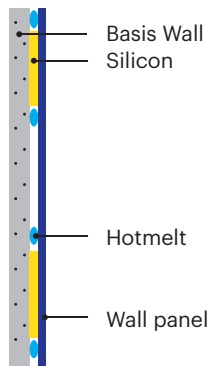
Apply silicon and hot-melt adhesive 4mm wide and 4mm high. Spacing: Inside edge 10mm, within 300mm of interior space

! Do not use wood glue (primary cause)

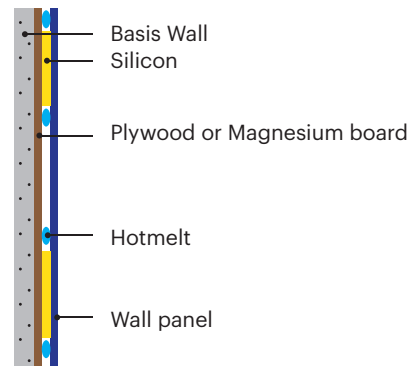


Construction method according to conditions

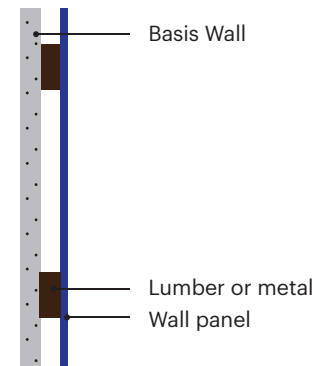
Direct installation on the basis wall



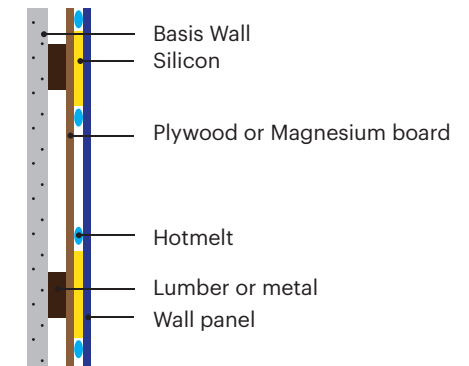
Direct installation on Plywood or Magnesium board



Direct installation to stud



Stud construction





Premium wall



HDC PW103



HDC PW402



HDC PW200



Commercial Partition



HDC PW402

M-Board



HDC PW101



HDC PW200

Image missing!

Interval	Thickness	Diameter	Size(mm)
16mm	7mm / 8mm	6mm	600x1200 1200x2400
32mm	7mm / 8mm	6mm	600x1200 1200x2400



Product Introduction

This product is designed to produce high-end interior finish with sound absorption function that meets the criteria of architectural law and the use of space.

Product characteristics

- ¹ Eco-friendly
- ² Highly resistant to scratches, abrasion, stains heat resistant HPM is used as a finish.
- ³ It offers a wide range of ¹⁰⁰ different colors for excellent interior design.

Product usage

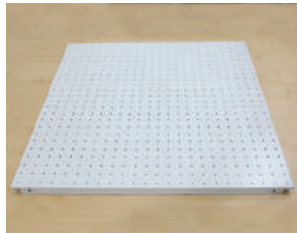
- ¹ Space requiring noncombustible materials according to the Building
 - School, academy, cultural and assembly facilities, religious facilities, training facilities, etc.
- ² A place where noise vibration needs to be improved for indoor sound.
 - Auditorium, sports facilities, religious facilities, hagwon, large space, etc.
- ³ A space that requires accurate voice
 - A music room, a conference room, a lecture room, a broadcasting room

Allows you to select the appropriate hole size for the installation site

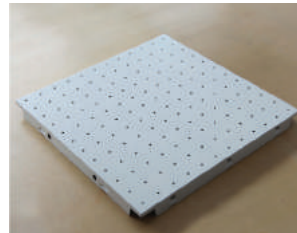
16P	32P
A sound room, broadcasting room, conference room, Small interior space, etc.	Corridors, stairs, classrooms, feeding rooms, gymnasiums, auditoriums, large space, etc.



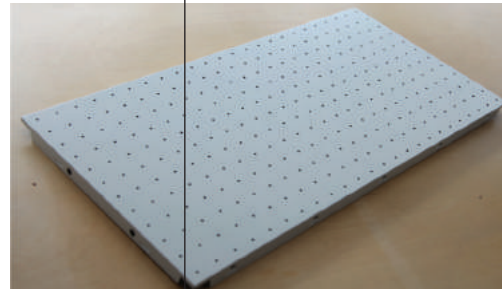
Metal ceiling



300x300mm



600x600mm



300x600mm



Eco-friendly

We used eco-friendly materials. It excludes environmental pollution and all the bad factors.



Abrasion

The hardness of the pencil is 2H. The edge does not break when it is cut.



Lightweight

Very light compared to other ceiling materials for transportation, construction and handling. It's easy.



Chemical resistance & Insulation

Ultraviolet discoloration, acid rain corrosion, no damage. It's an inorganic color coating.



Weatherproof & Corrosion resistance

It responds to all climatic conditions, including coastal areas and factory areas. It is permanently preserved in the environment.



Absorbability

It has excellent sound absorption. It's very suitable for offices, department stores, and schools.



Flexibility

The coating will not be damaged by bending or impacting. It's flexible.



Easy cleaning



Easy construction

